

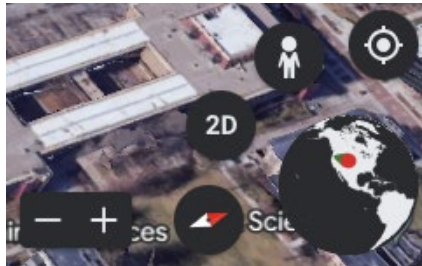


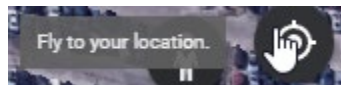
Geospatial Exploration for Retail
June 8, 2023
Geospatial Centroid

Part 1: Exploring in Google Earth

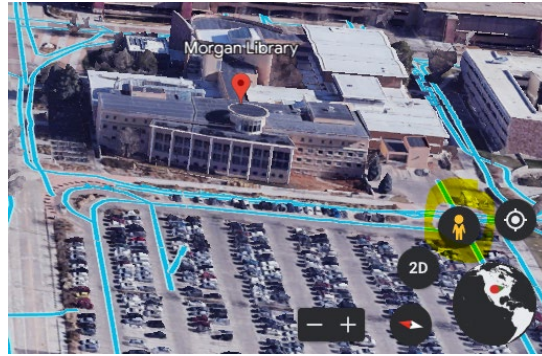
1. First, we will explore the splendor of geospatial technologies in Google Earth!
2. With the web-based version of Google Earth for Chrome, you can explore worldwide satellite imagery, as well as 3D buildings and terrain, for locations around the globe.
3. To navigate to Google Earth, click on the following link <https://earth.google.com/web/>.
4. Click on the search icon  and type in “Morgan Library”.
5. Multiple options appear but we want the “University library in Fort Collins, CO.”
6. When you click on this option, you will fly to our current location in Google Earth!
7. A pop-up will appear. Click the carrot  at the top to minimize the content in the pop-up.
8. We will use the icons in the bottom right corner to explore Google Earth.



Note: We could have also navigated to Morgan Library by clicking the “Fly to your location” icon.



9. Your view should be in 3D--meaning the “Tilt the view” icon will read “2D”. (Toggle this to see the difference between views.) Make sure you are in 3D view.
 - a. MOUSE CONTROLS:
 - i. Use scroll wheel on mouse to zoom in and out.
 - ii. Press and hold scroll wheel to spin around!
 - iii. Double-click the left button to zoom to specific point.
10. Let’s use the “Street View” icon to take a walk around CSU campus and Morgan Library.
 - a. When you click on the little person icon, blue lines will appear on the map where “Street View” is available.



- b. Drag and drop the little guy onto one of the blue lines and start looking around!
- c. MOUSE CONTROLS:
 - i. Use scroll wheel to zoom in and out
 - ii. Press and hold left button to spin around
 - iii. Click white arrows on screen to move you down the road

11. *Now, you're an earth explorer! Use the search bar to find other meaningful locations to you.*

12. *Working with your neighbor sitting next to you in the lab, share some of the cool places you "traveled" to. Did you find any other interesting features in Google Earth?*