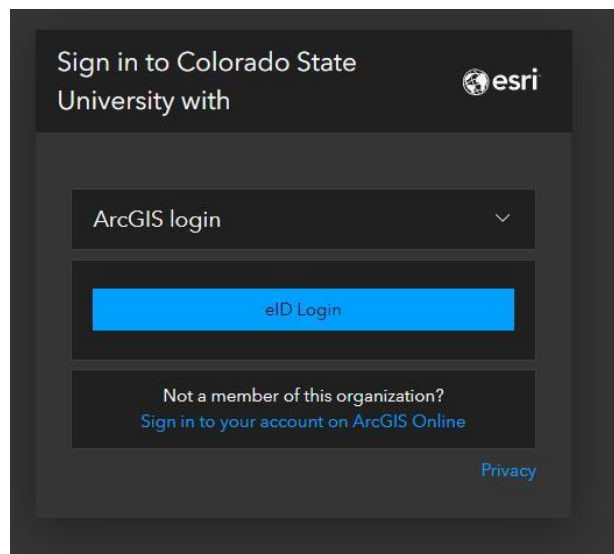
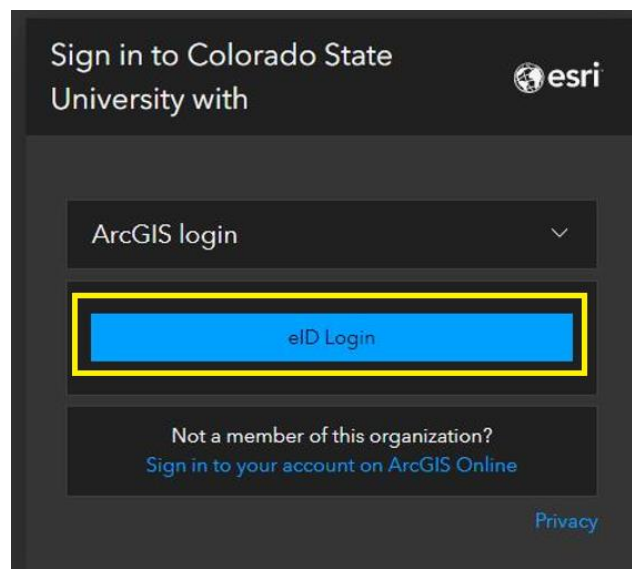

New Users: Logging in to ArcGIS Online using CSU eID credentials (SSO – Single-sign on)

TO LOG IN TO ARCGIS ONLINE (ArcGIS Pro instructions are further below.)

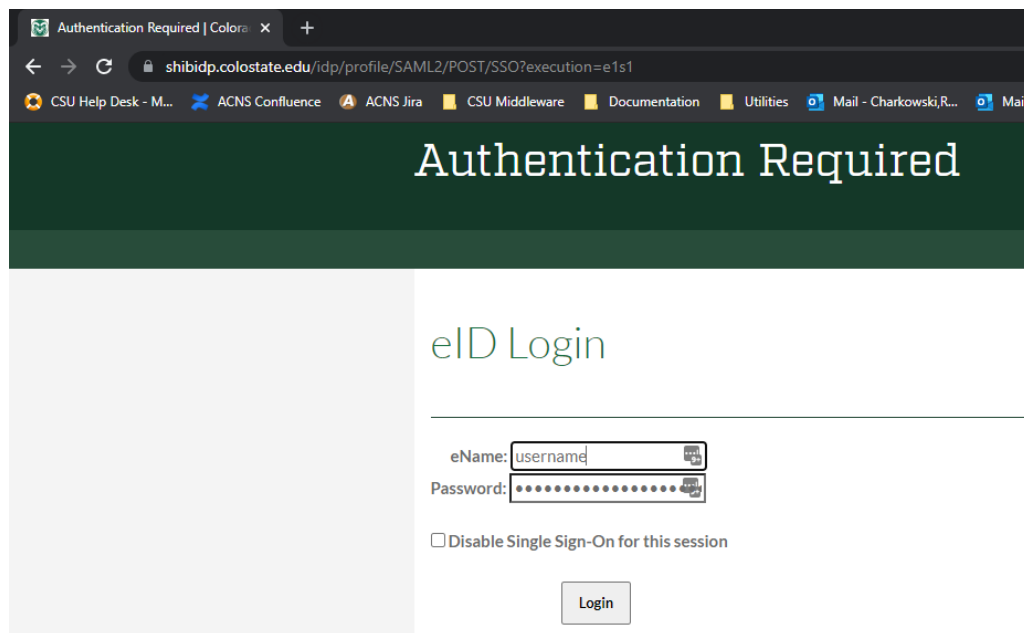
- 1) Navigate to <https://csurams.maps.arcgis.com/>
- 2) You should see a login screen like this:



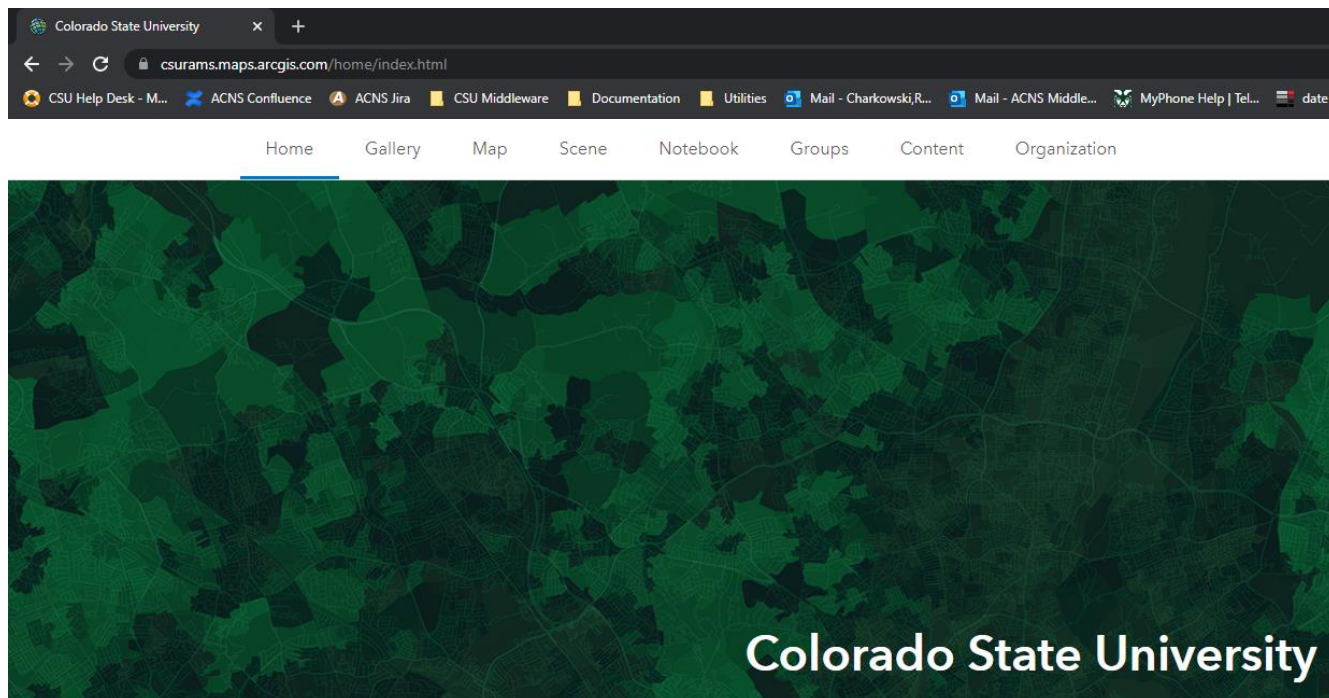
- 3) Click **eID Login**. This will enable you to sign-in to ArcGIS Online using your CSU eID credentials.



You should then see the commonly-used CSU eID login page:



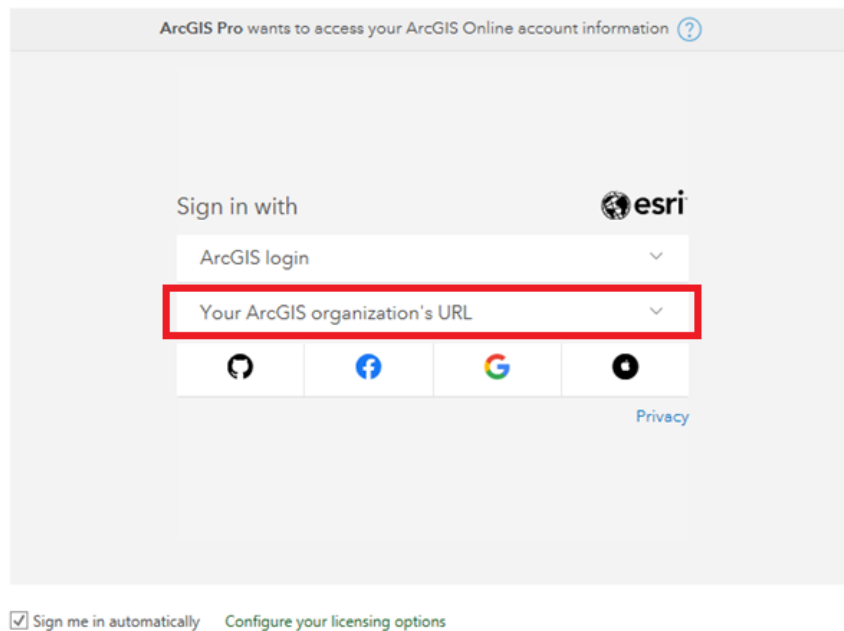
- 4) Once you enter your credentials you will be automatically logged into your ArcGIS Online account and see the ArcGIS page for CSU.



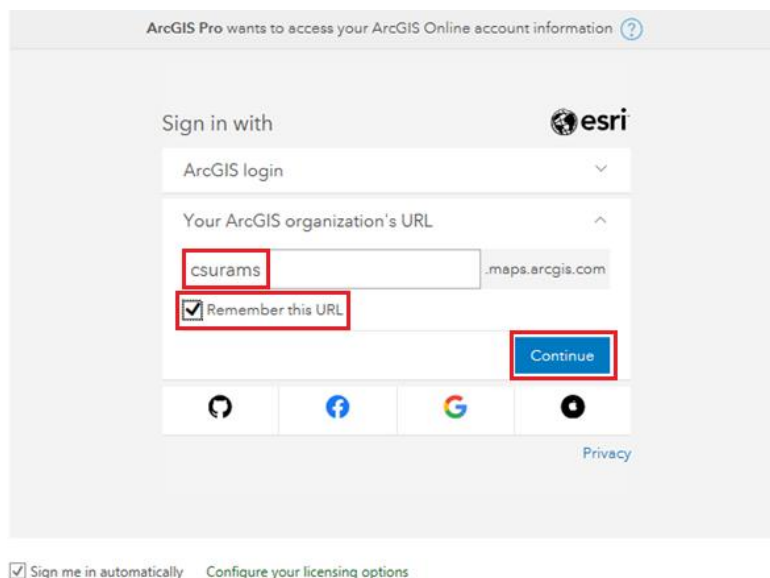
New Users: Using ArcGIS Pro (desktop) with CSU eID credentials (SSO – Single-sign on)

FOR ARCGIS PRO

1. Launch the ArcGIS Pro (desktop) application, and you will be asked to log in. Click on the arrow for **Your ArcGIS organization's URL**.




2. Type **csurams** in the space provided. Click **Remember this URL**, then **Continue**.



3. Click the link for **eID Login**.

ArcGIS Pro wants to access your ArcGIS Online account information ?

Sign in to Colorado State University with 

ArcGIS login ^

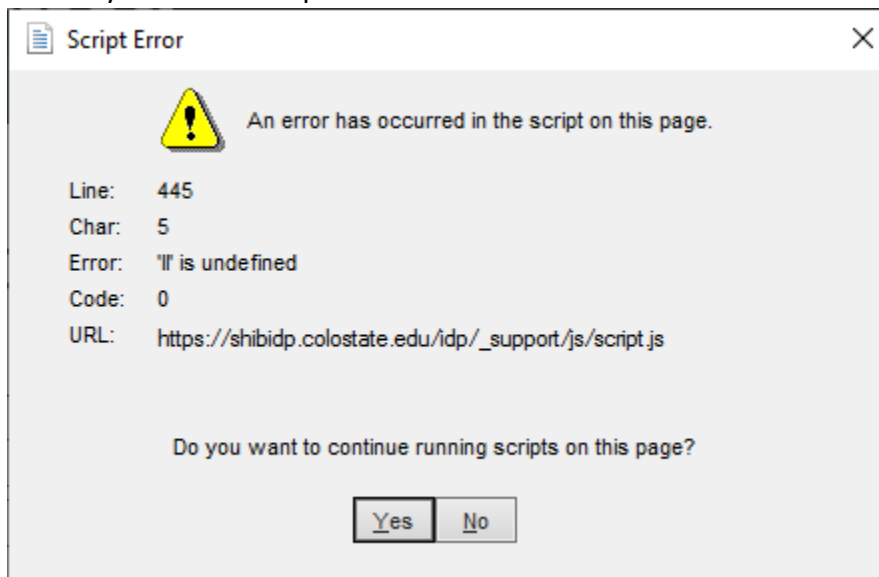
Password

[Forgot username?](#) or [Forgot password?](#)

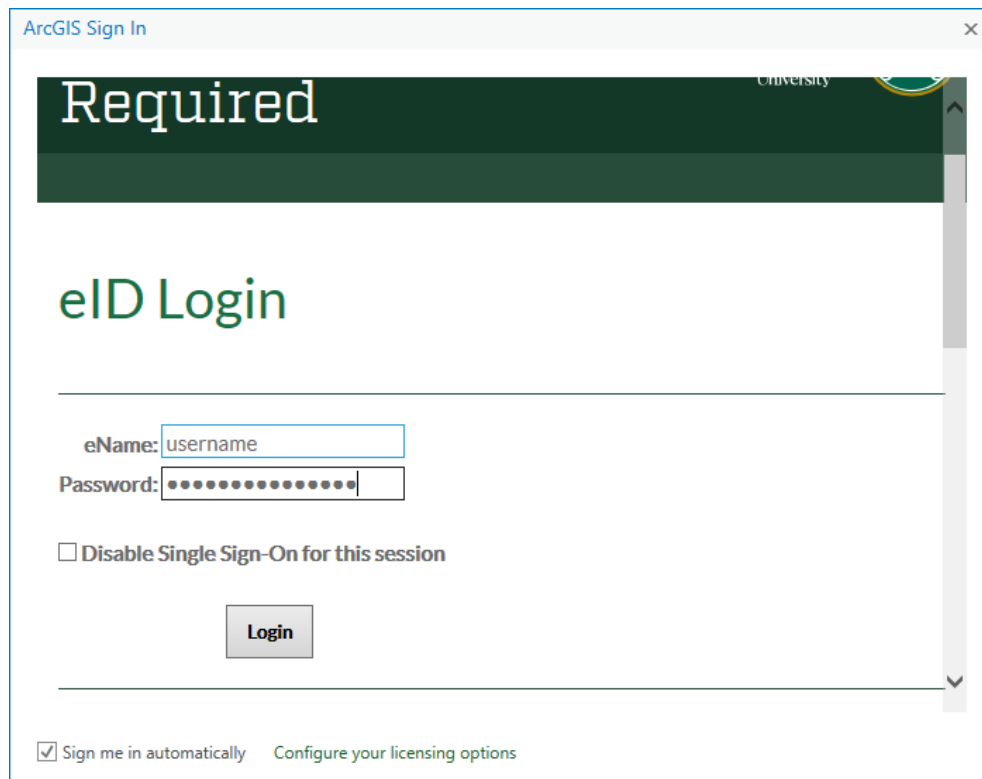
[Privacy](#)

Sign me in automatically [Configure your licensing options](#)

- a. You may see a JavaScript error. Click **Yes** to continue



4. Log in with your CSU eID username and password.



The screenshot shows a web browser window titled "ArcGIS Sign In". At the top, there is a dark green banner with the word "Required" in white. Below the banner, the text "University" is partially visible. The main heading is "eID Login". There are two input fields: "eName:" with the text "username" and "Password:" with a masked password of 12 dots. Below the password field is a checkbox labeled "Disable Single Sign-On for this session". A "Login" button is centered below the checkbox. At the bottom left, there is a checked checkbox labeled "Sign me in automatically" and a link "Configure your licensing options".

Questions? Email: gis@colostate.edu

or

if you are affiliated with WCNR or are a CEMML employee, please reach out to wcnr_it_support@mail.colostate.edu